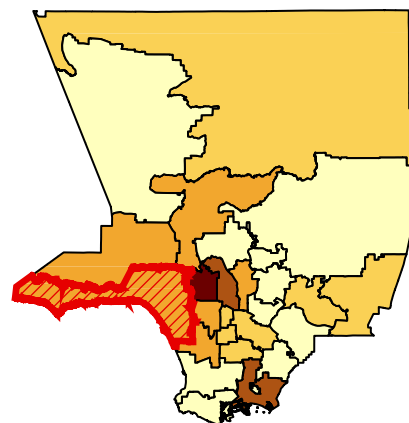
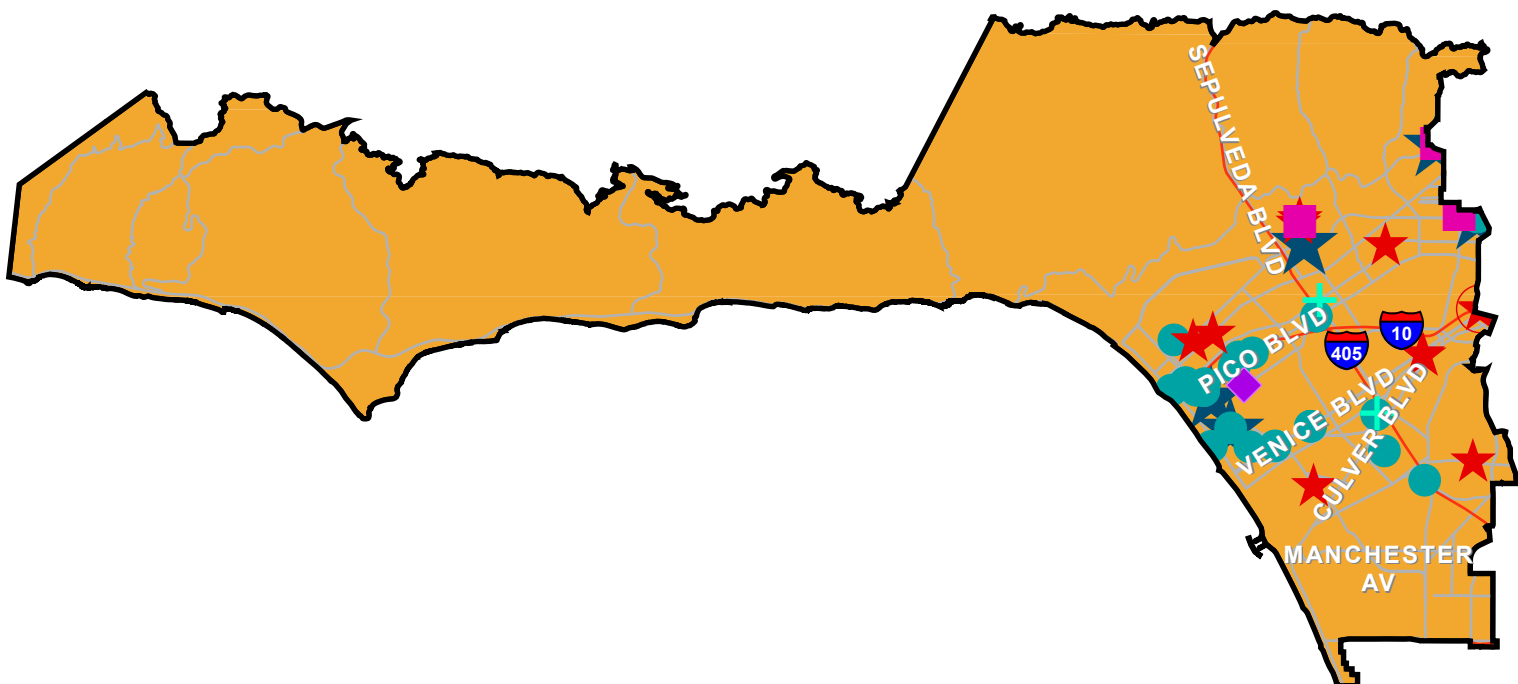


Estimated Number of PLWH Residing in the West Health District at the End of 2015

Area Size (% of LAC): 189 square miles (5%)
 Health District Population (% of LAC): 660,081 (6%)
 PLWH (% of LAC): 3,034 (5%)
 HIV Rate (Rank in LAC): 460/100,000 (11 of 26)

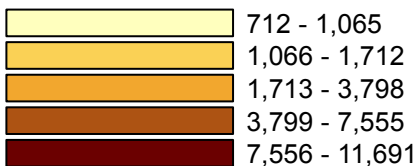


Area Shown Below



Legend

Estimated Number of PLWH



- | | | | |
|--|----------------------|--|---|
| | HIV Testing Provider | | Hospital (in Statistically Impacted Area) |
| | Ryan White Provider | | Hospital |
| | PrEP Provider | | Federally Qualified Health Center |
| | DHS Facility | | |
| | DMH Facility | | |