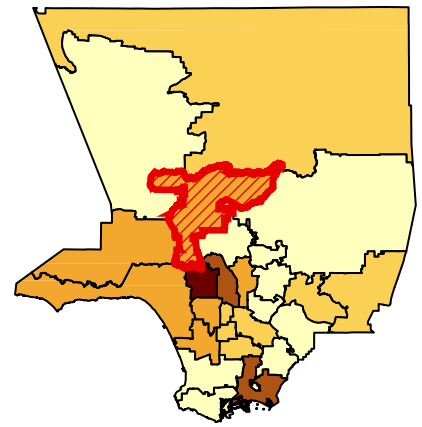
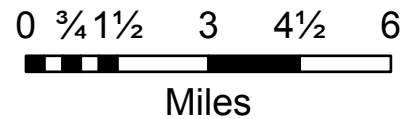
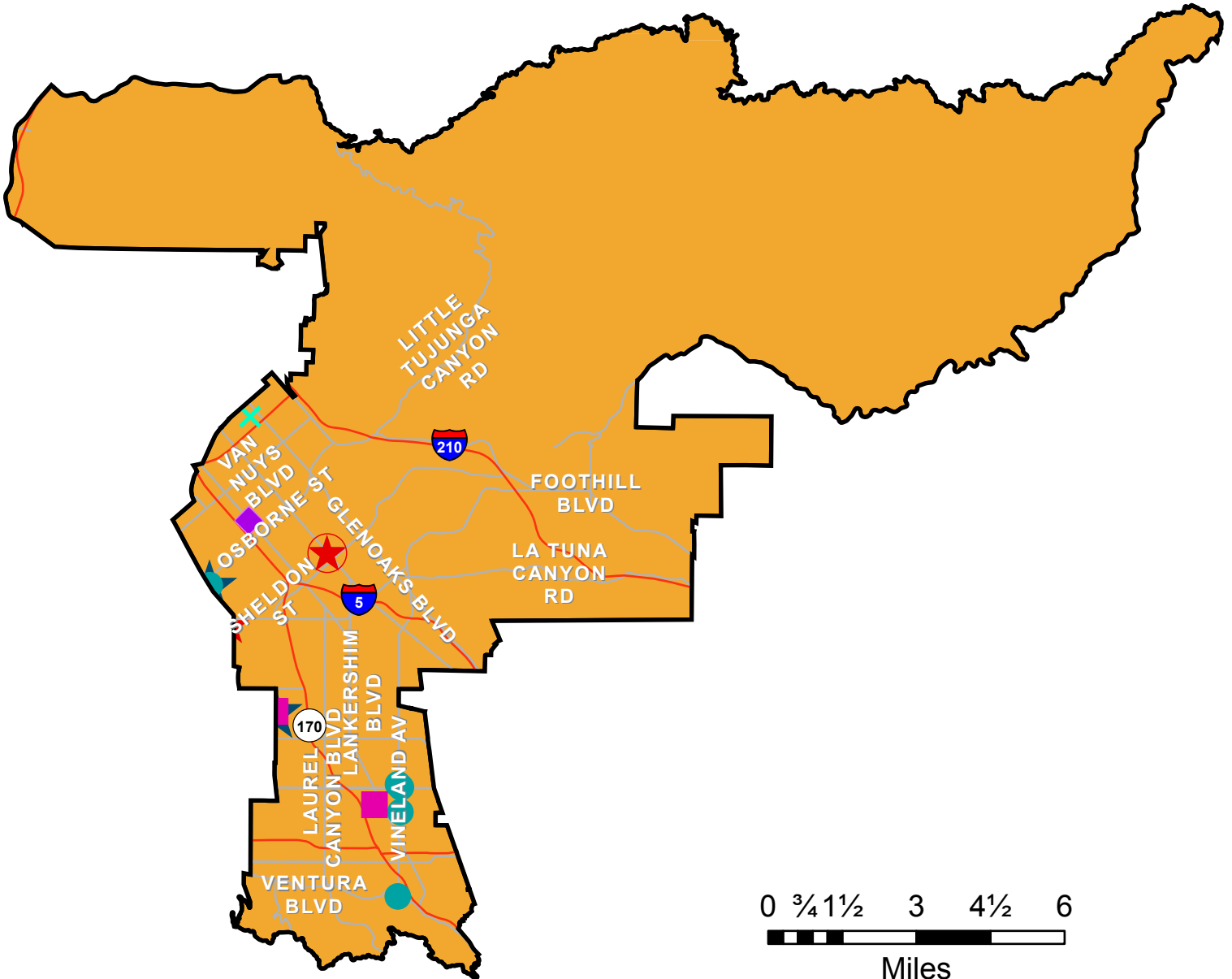


Estimated Number of PLWH Residing in the East Valley Health District at the End of 2015

Area Size (% of LAC): 192 square miles (5%)
 Health District Population (% of LAC): 462,314 (5%)
 PLWH (% of LAC): 2,894 (5%)
 HIV Rate (Rank in LAC): 626/100,000 (8 of 26)

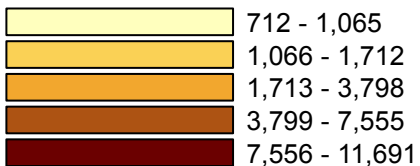


Area Shown Below



Legend

Estimated Number of PLWH



- ★ Ryan White Provider
- ★ Hospital (in Statistically Impacted Area)
- ★ Hospital
- PrEP Provider
- ◆ Federally Qualified Health Center
- × DHS Facility
- + DMH Facility
- HIV Testing Provider